

Concealed Cistern C/W H Frame

Product Features

- Front operated conceal tank
- Dry wall or solid wall installation
- Impact resistant high density polyethylene tank
- Can be modified into pneumatic version cistern

Product Specification

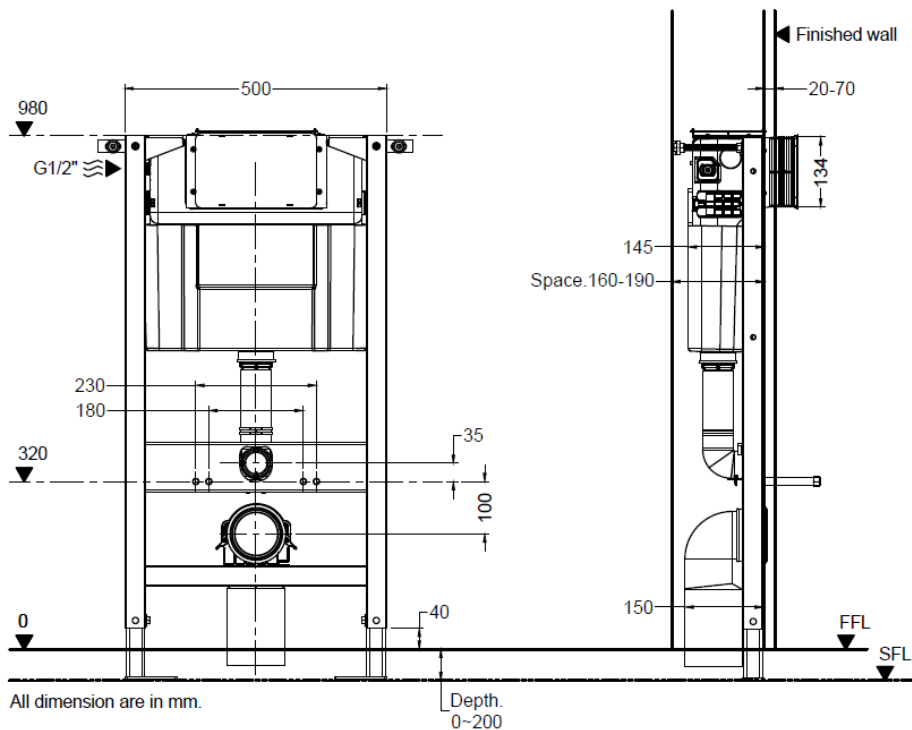
- Dimension : 500(L) x 145(W) x 980(H)mm
- Fasten distance for wall-hung : 180/ 230mm
- Floor construction : 0~200mm
- Material (Cistern) : HDPE
- Material (Frame) : Q195
- Discharge volume : 3.5 – 6.0 Litres/ full flush
: 2.5 – 3.0 Litres/ reduced flush

Applicable Products

- WH8014BP, WH7100BP, WH9030BP, WH3000BP, WH12000BP



Technical Drawing



Rev	0.1
Date	12.11.2020