

BP BOX 32-32/6M

MODEL **BP BOX 32-32/6M****Insulated cabinet fan**

Centrifugal insulated cabinet fan. Constructed with forward curved and double inlet metal sheet impeller, with a direct driven motor assembled in the air stream.

CHARACTERISTICS

- Forward curved wheel of galvanized metal sheet.
- Double inlet direct driven.
- Galvanized steel cabinet with insulation panel resist class M1.
- Three phase or single phase motor IP54. Electrical isolation class F.
- S models, with Double skinned 20mm width box with rockwool acoustic isolation with 70kg/m³ density.



OPTIONS:

- Different tensions, speed, frequencies or 2 speed motors.
- Different position of inlet or outlet.
- With filter for inlet (specify quality).

BP BOX 32-32/6M

PRODUCT TECHNICAL DETAILS

Max Airflow	6,259.01 cmh
Max St Pressure	304.84 Pa
Diameter	32-32 mm
Ballancing	Q6.3 DYNAMICALLY
Impeller material	Galvanized steel DX51D-Z
Casing material	Galvanized steel DX51D-Z
Approx weight	60 kg

MOTOR TECHNICAL INFORMATION

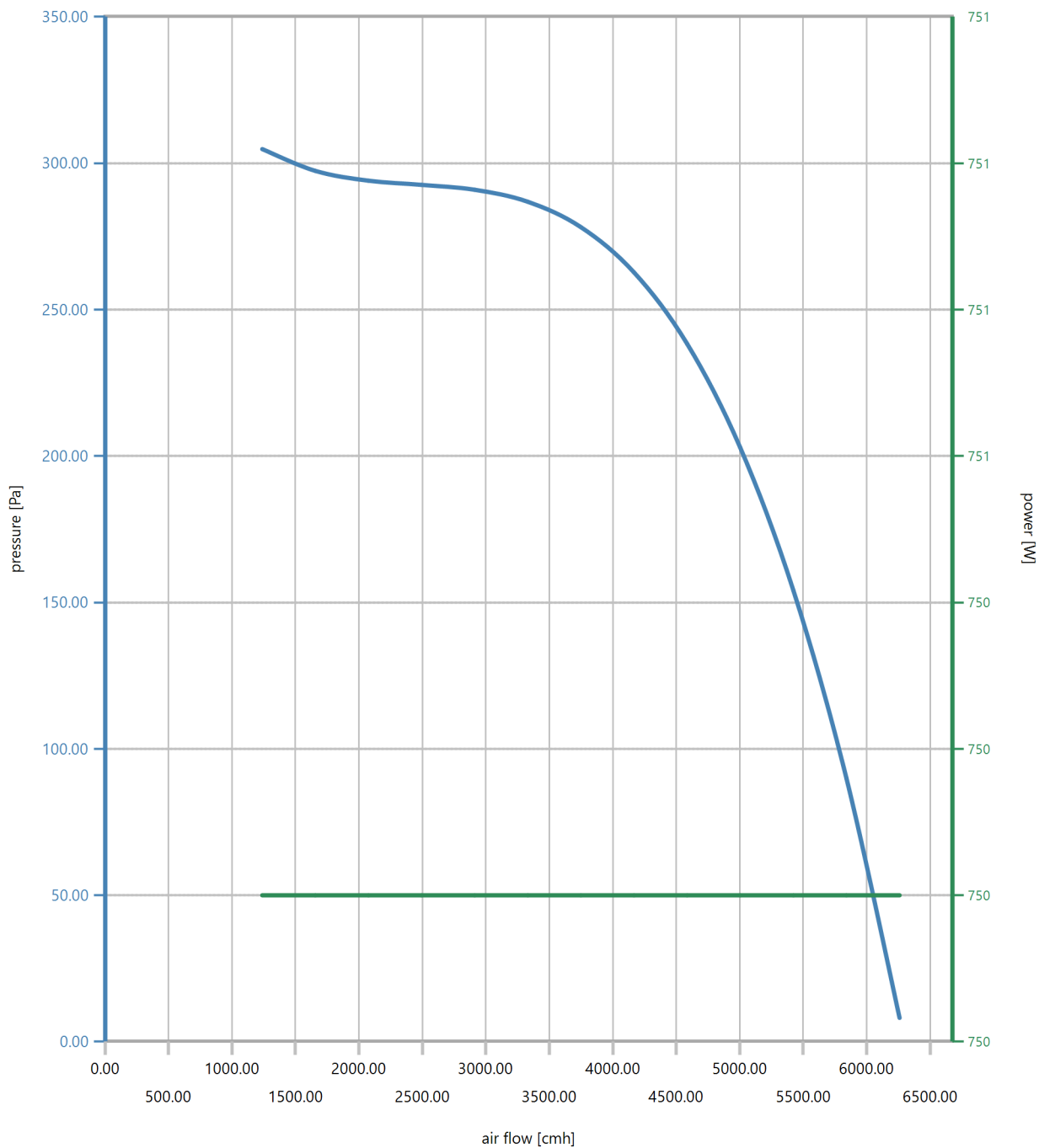
Mechanical Power	0.75 kW
Voltage	~1/50Hz
Pole	6.00
Rated speed	925.00 rpm
Rated current	5.20 A

D125/2009 ECODESIGN VALUES, ACCORDING TO R1253/2014, AT IT'S MAXIMUM EFFICIENCY POINT

Airflow	1.13 m3/s
Pressure	282.79 Pa
Electrical Power	750.00 W
η fan	42.54 %
η TARGET 2018	40.22 %

PRODUCT PERFORMANCE

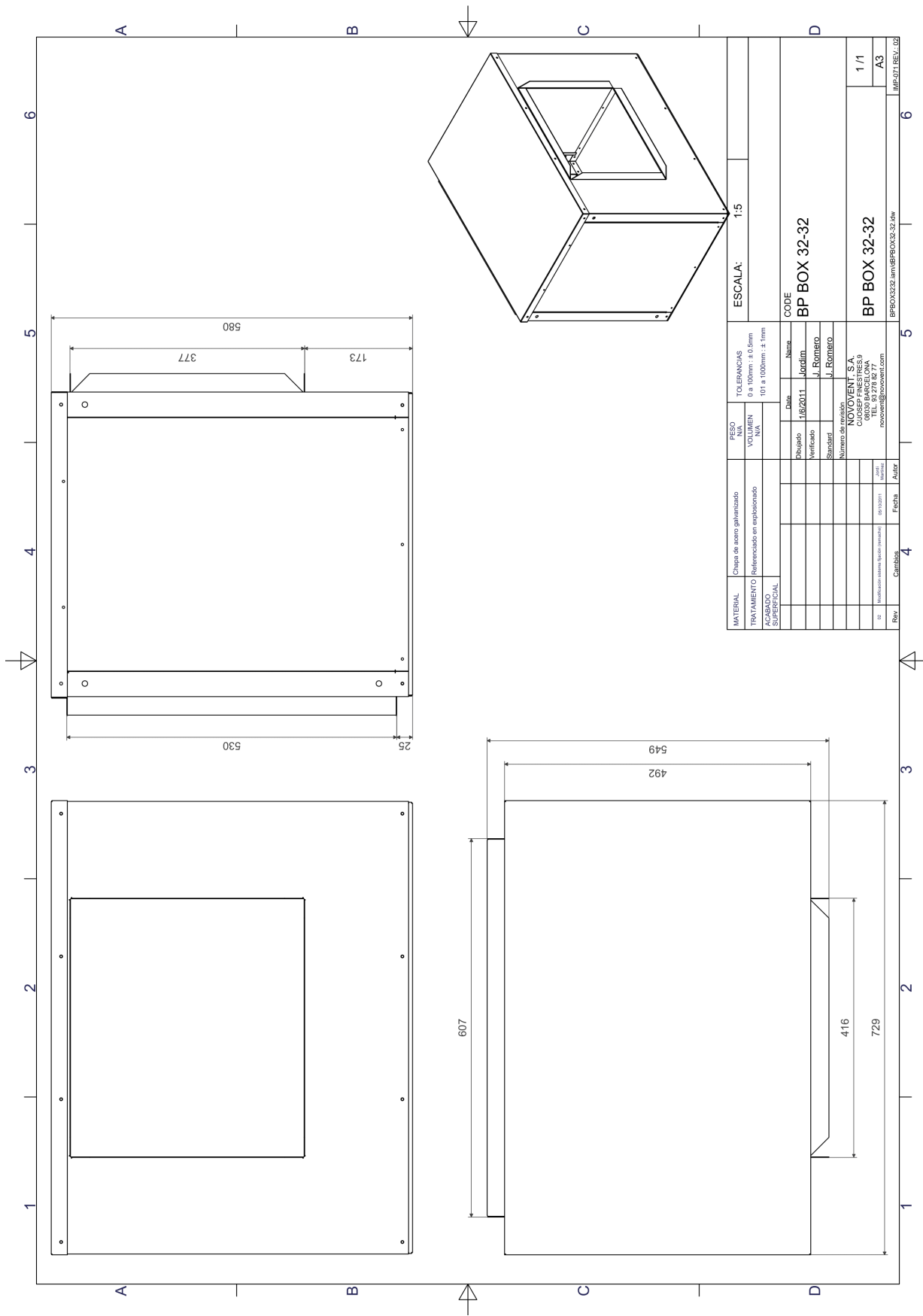
(airflow vs pressure & airflow vs power related to normal conditions T20°C and 1,2046kg/m3 air density)



NOVOVENT reserves the right of change any design (including drawings, materials and specifications) and is the sole owner of the software development, not accepting mistakes that could happen because of a faulty installation or based on a non updated version of software. Information given on this data sheet is for this specific fan being highly recommended to refer and follow the project requirements and instructions. This data sheet has been printed on 20/05/2022 using software version 2017. Sound data are given under laboratory conditions and may differ from operation and mounting conditions. Use this sound data as a reference only. Drawings are for dimensional purposes only. Start currents are DOL for motors power below 4kW and above are Star Delta.

BP BOX 32-32/6M

PRODUCT DIMENSIONS



NOVOVENT reserves the right of change any design (including drawings, materials and specifications) and is the sole owner of the software development, not accepting mistakes that could happen because of a faulty installation or based on a non updated version of software. Information given on this data sheet is for this specific fan being highly recommended to refer and follow the project requirements and instructions. This data sheet has been printed on 20/05/2022 using software version 2017. Sound data are given under laboratory conditions and may differ from operation and mounting conditions. Use this sound data as a reference only. Drawings are for dimensional purposes only. Start currents are DOL for motors power below 4kW and above are Star Delta.

BP BOX 32-32/6M

ACCESSORIES

	BPTE3224	TEJADILLO BP BOX 32-32	
	AM0000001	AMORTIGUADOR METALICO 10-25	
	BPTCA32	ROUND INLET BP BOX 32-32	Round Inlet/outlet.
	BPTCI32	ROUND OUTLET BP BOX 32-32	Round outlet.
	BPTE32	ROOF BP BOX 32-32	Roof for cabinet.
	BPTF1212	FI BPT BOX 12-12	Filtering assemblies Galvanised plate suction plenum. Fractured filter EU-3/EU-4. Removable sideways.
	VMR	STOP 16-3	Switch Switch (STOP) IP 65 On/Off Switch for maintenance operations on roof units.
	VMR	STOP 16-6	Switch Switch (STOP) IP 65 On/Off Switch for maintenance operations on roof units.
	BPTVI18	VI BPT 18-18	
	BPTVA99	VA BPT 9-9	
	JEABP32	JUNTA ELASTICA ASPIRACION BP 32	

BP BOX 32-32/6M



JEIBP32

**JUNTA ELASTICA
IMPULSION BP 32**



SNTP025D

TP 25D

Adjustable differential pressure transmitter for motoring the differential pressure of the air.

Applications: Monitoring air filters and fans.

- Housing in ABS, IP54.
- Operating temperature: -10°C ... +50°C.
- Ambient humidity: 0-95%.



PR00005

PR 5

Differential pressure switches

- Housing in ABS, cover in PC, IP54.
- Operation temperature: -20°C ... +60°C.
- Max. Pressure: 50kPa.
- Supply voltage: 20 ... 28VDC.