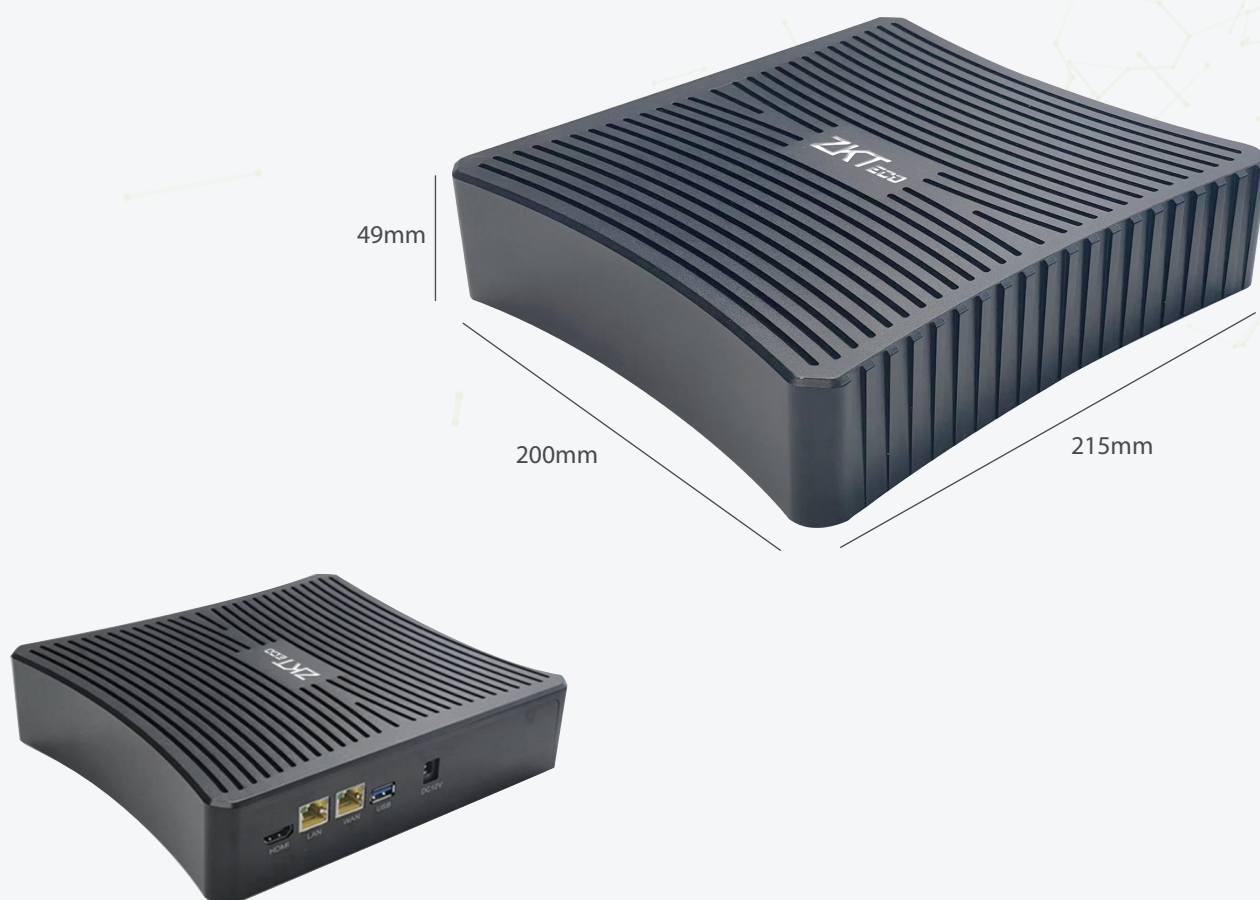


# ZKIVA-Edge T1

Networked Intelligent Video Analytics Edge

- 1 Product Dimensions
- 2 Product Introduction
- 3 Product Features
- 4 Application Scenarios
- 5 System Topology
- 6 Product Specifications

## Product Dimensions



## Product Introduction

### ZKIVA-Edge T1

#### Networked Intelligent Video Analytics Edge

ZKIVA-Edge T1 is the video analytic edge developed to assist regular IPC to equip with intelligent video analytics, such as behavior analysis, facial recognition, perimeter protection, trailing detection, and personnel checking. This edge server is developed with industry-leading computer vision and deep learning technology and equipped with a high-performance NPU to output a fast, stable, and accurate video analytic performance.

ZKIVA-Edge T1 is seamlessly integrated with the newly built VMS module in the ZKBio CVSecurity platform, which brings its performance to reach a new height. ZKIVA-Edge T1 provides behavior analysis capabilities, including people gathering, falling down, physical conflict, smoking, fast-moving, and answering the phone. In addition, ZKIVA-Edge T1 has perimeter alarm functions, which offer people and vehicle line crossing detection, people intrusion detection, people loitering, people across the perimeter, illegal parking detection, and vehicle leaving detection.

Moreover, the ZKIVA-Edge T1 is a fully open system, which welcomes all kinds of cameras and video sources from any 3rd party brand if its supports RTSP.

## Product Features

- Supports Human Behavior Analysis ( people gathering, physical conflict, and smoking, etc. )
- Supports Perimeter Alarm Functions ( people and vehicle line crossing detection, people loitering detection, and illegal parking detection, etc. )
- Industry-leading Computer Vision and Deep Learning Technology
- Embedded Multiple Intelligent Video Analytics Functions
- Supports up to 8MP Resolution Inputs for Intelligent Analytics
- Supports H.264, H.265 Compression Standard
- Supports Up to 300,000 Face templates for Facial Recognition
- Supports Real Time Streaming Protocol (RTSP)

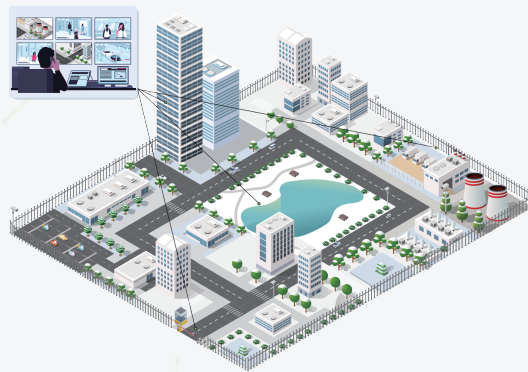
## Application Scenarios

### • Renovation Projects

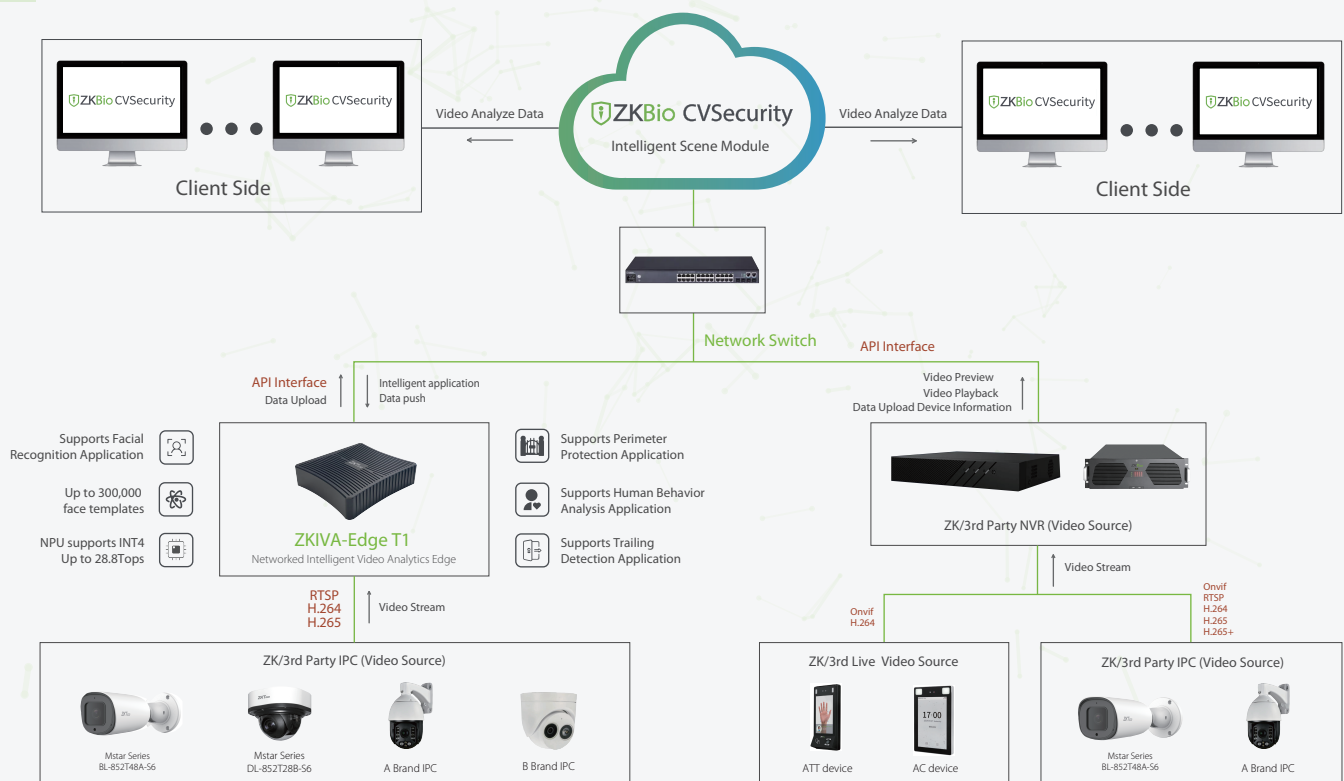
Instead of installing a new intelligent video system, ZKIVA-Edge T1 provides another option to upgrade the existing IPC systems.

### • All-in-One Solution

Instead of using multiple systems, ZKIVA-Edge T1 is seamlessly integrated with ZKBio CVSecurity, which offers an All-in-One solution that covers most security needs.



## System Topology



Version	ZKIVA-Edge T1(8Ch)
<b>Intelligent Video Analysis</b>	
Facial Recognition	Up to 8-ch real-time facial recognition
Perimeter Protection	Up to 8-ch digital perimeter protection
Personnel Control /Trailing Detection	Up to 8-ch digital facial recognition
Behavior analysis	Up to 8-ch digital behavior analysis
<b>System Parameters</b>	
Processor	4 core 1.3Ghz ZKTeco Customized Computer Vision CPU
NPU	Support INT4 up to 28.8Tops
Memory	LPDDR4: 2xLPDDR4X / 2x2GB
Flash Memory	EMMC: 8GB(32GB optional)
Operating System	Linux
<b>Video Input</b>	
Video Resolution	1920 x 1080 (2MP)
	2560 x 1440 (4MP)
	3840 x 2160 (8MP)
Decoding Capability	H.264, H.265
<b>Function Parameters</b>	
Facial Parameter	Capture Accuracy Rate $\geq 99\%$ Capture False Rate $< 1\%$ True Accept Rate (Allow list) $>99.5\%$ False Rejection Rate $<0.5\%$ * Resulted in a Laboratory test with 300,000 face templates
<b>Interface Parameters</b>	
Network Interface	One 100M/1000M self-adaptive Ethernet interface, RJ45
USB Interface	1 USB3.0
Power Interface	1 DC 12V
<b>Operating Environment</b>	
Operating Temperature	-20°C to 60°C
Storage Temperature	-30°C to 70°C
Operating Humidity	10% to 90%RH
<b>Other Parameter</b>	
Power	DC12V $\pm$ 10%, 2A
Casing Material	Metal
Dimension (L*W*H)	200 * 215 * 49 (mm)
Net Weight	1.55kg

